



TTS - Jib rest collision prevention

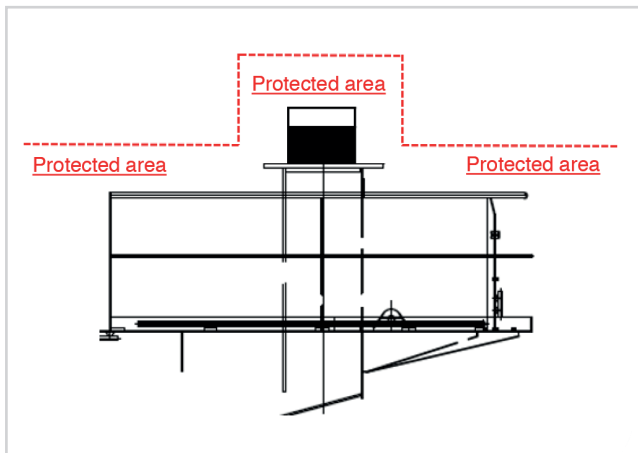
It's a fact that many ship board cranes regularly experience heavy damage of the steel structure and deformations of the jib bearing due to shock impacts. This often occurs when the limit switches that are required to keep the crane within the allowed working range are not correctly adjusted. As you can see from the images here, around 80% of the repair enquiries we receive are based on a collision with the jib's own rest located on the crane column.

Of course, when this happens, the crane can be out of action for a considerable time. Also, finding a repair solution, all the required section drawings, class approval and fabricating the parts, can increase the downtime and lost revenues.

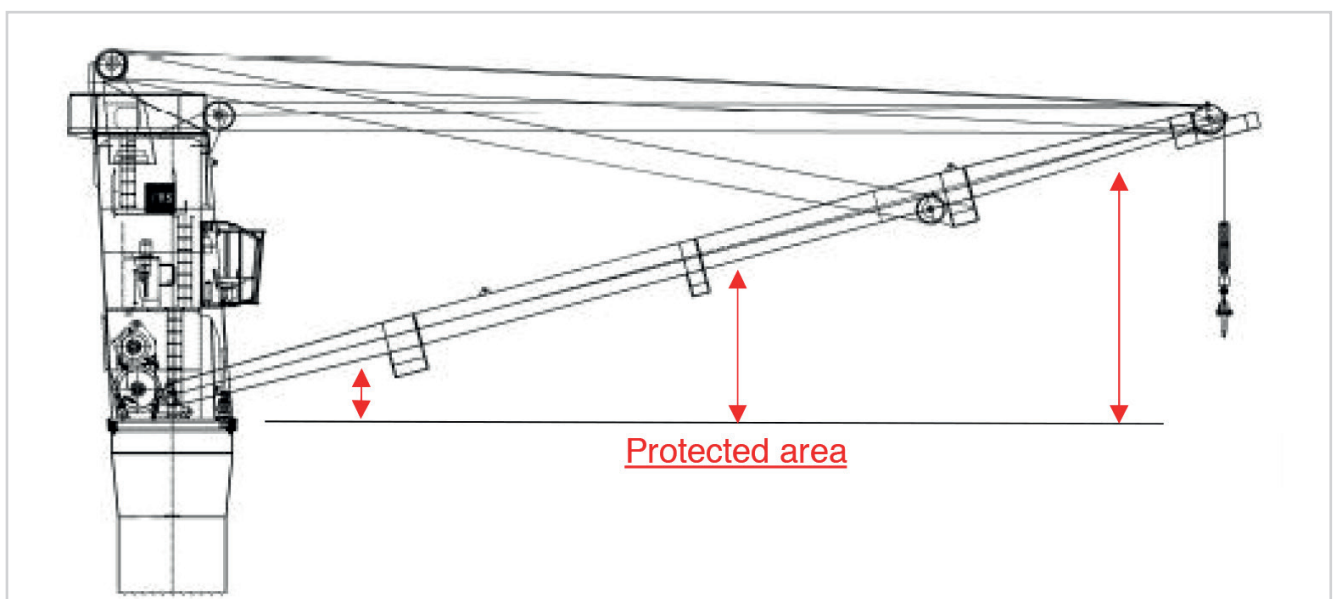
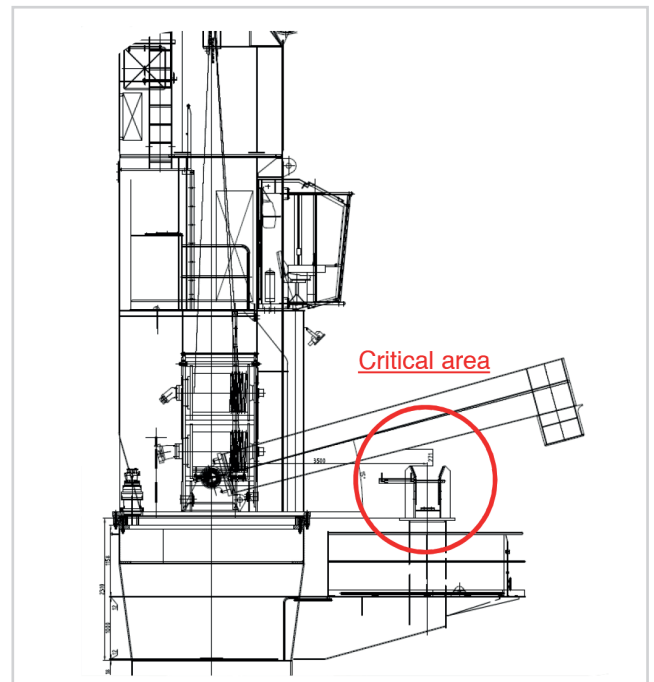
In order to avoid these type of scenarios, TTS has developed a jib rest collision protection device that blocks the area around the jib rest, even when the limit switches are not correctly aligned.

TTS - Jib rest collision prevention

TTS - Jib rest collision prevention



So, how does the system work? As you can see from the illustrations here, we simply combine a slewing range limitation along with a luffing range limiter for the critical area. This effectively is a small amount of hardware that is a very cost-effective solution because it provides an economical alternative to expensive repairs. The system can be tailored to meet all type of cranes and ship board applications.



If you would like to discuss how this technical solution could be applied on your vessels, please contact TTS at the address shown here.

TTS-NMF GmbH

Service Dept.
Biedenkamp 13b
21509 Glinde

Tel: +49 40 554 361 753

Email: abobinac@nmf-crane.de | spareparts@nmf-crane.de



For further information please contact your local TTS Service Station.

www.ttsgroup.com