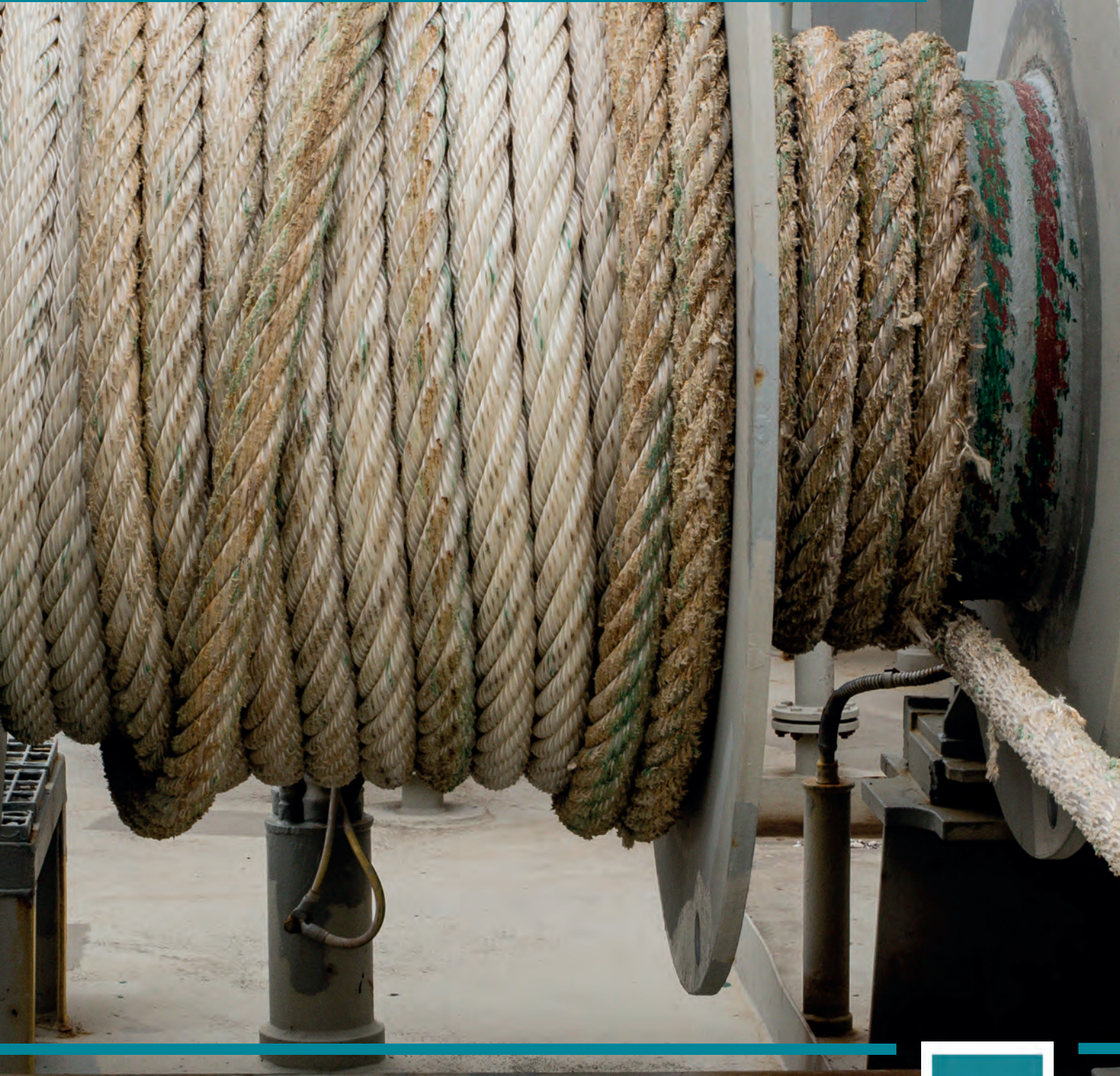


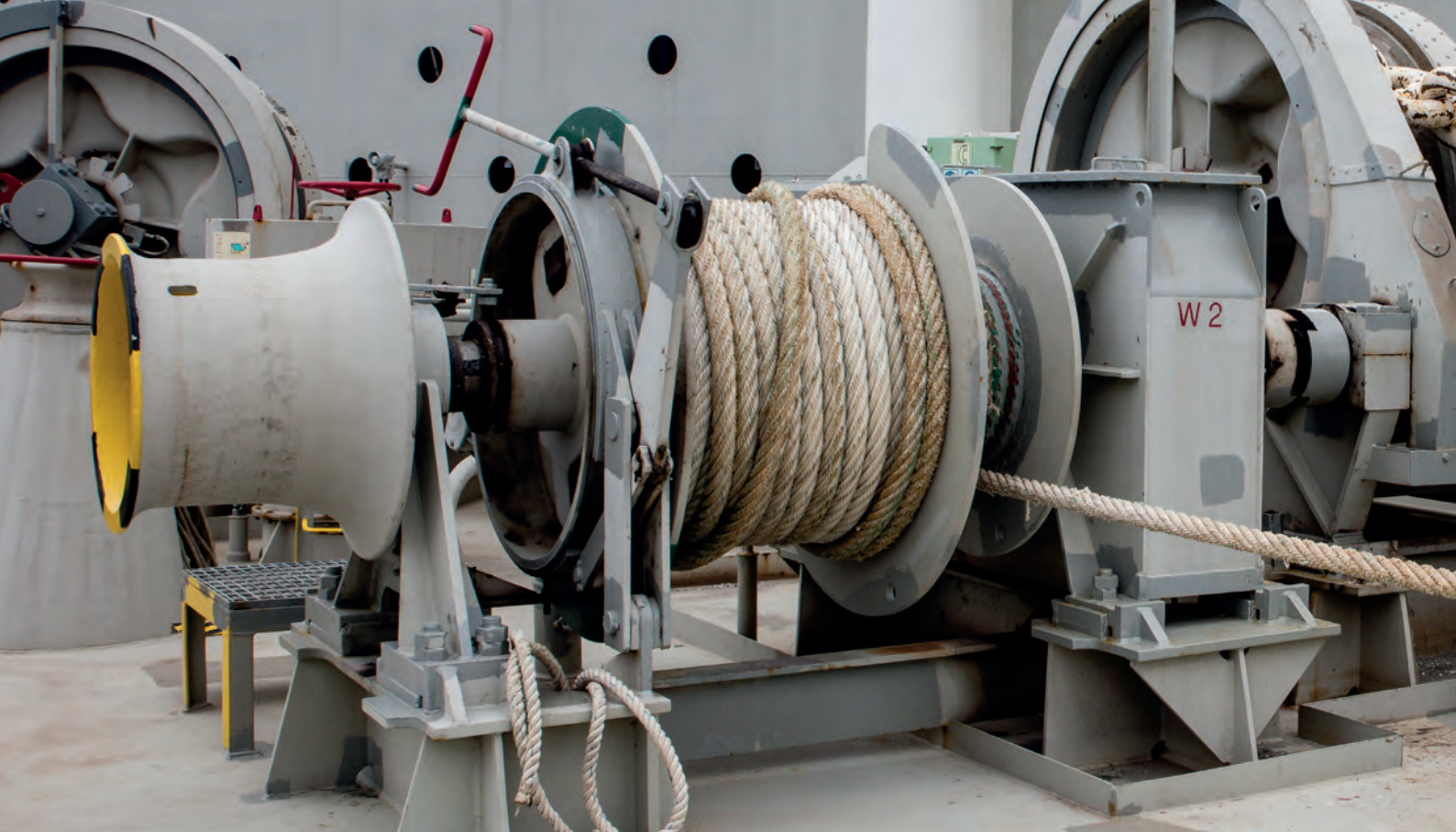
Spring load upgrade

EXTENDS THE LIFETIME OF THE ROPE AND AVOIDS OVERLOAD



TTS

A MacGregor Company



SPRING LOAD UPGRADE

The brake holding capacity of the drum band brake is vital to the safety and operation of the mooring winch. Our spring loaded drum band brakes are a simple solution to the issues that arise when conventional drum band brake linings become worn out. With our spring loaded drum band brake, you can avoid overtightening of the brake and ensure the holding capacity is correct.

In order to keep in line with requirements from the OCIMF, our spring loaded drum band brake has a holding capacity of 60-80% of the line's MBL. This helps avoid unnecessary wear and tear on the rope. The spring loaded drum band brake protects your mooring ropes and extends the lifetime. Together with the TTS Brake Test Kit, you can ensure your brakes have the correct holding capacity.

Increase the safety for the operator by reducing the chance for rope breakage with an upgrade to spring loaded drum band brakes.

