

SB 1000-105**Greasing of Anchor Part Band Brake Spindle**

2018-04-12

Rev. B

1 Scope and Target Group

⚠ WARNING

- ✓ Always refer to the user manual for additional information and safety warnings.
- ✓ Only perform this task if you are qualified to carry out the steps described below.
- ✓ Always make sure that the tasks described in this bulletin are intended for the equipment you are working on.
- ✓ If you are unsure about the workflow, steps or qualification, contact your TTS aftersales service contact.

Your aftersales service contact:

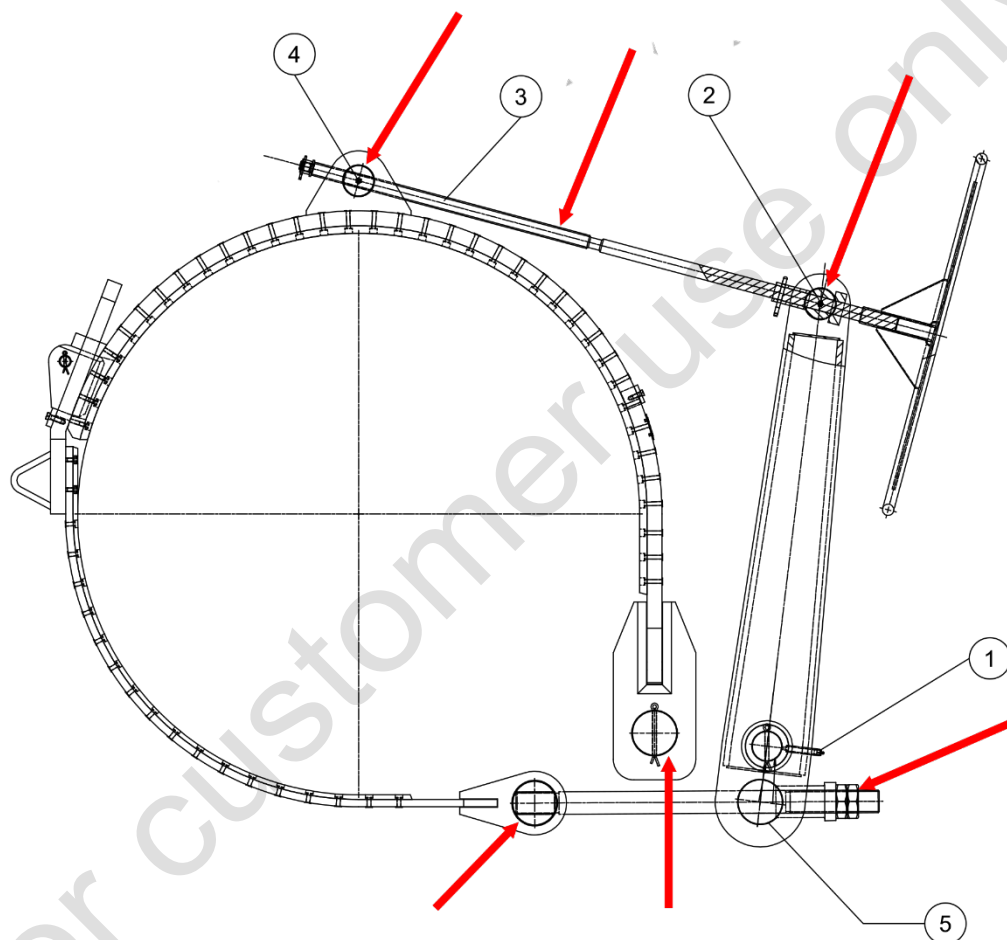
TTS Marine GmbH
An der Reeperbahn 6
D-28217 Bremen
Germany

Telephone: +49(421) 520 08-0
Telefax : +49(421) 52008-749
E-Mail: service@ttsgroup.com

2 Problem

When the spindle of the anchor part band brake is not sufficiently greased, the smoothness will be lost. This may lead to seizing up of the spindle and subsequently to breaking off of the hand wheel.

3 Solution



Lubrication points of the anchor part band brake

1. Toggle lever
2. Clevis pin for toggle lever
3. Thread brake spindle
4. Eyelet plate
5. Yoke pin for tie rod

NOTICE

Use a brush to apply the grease on the yoke pin for tie rod.

All sliding parts such as threaded spindles or gear wheels which are not provided with grease nipples must be occasionally be lubricated, that is, grease must be applied to these parts using a brush (see drawing above –red arrows).

All parts having grease nipples must be lubricated every six weeks in accordance with the extent of winch operation.

NOTICE

Before operation the smoothness of the spindle and the hand wheel must be checked and, if necessary, all parts must be greased according to instructions given above.

For customer use only